

WEEKLY COVID-19 TRANSPORT SECTOR KEY INDICATORS - 25 May 2020

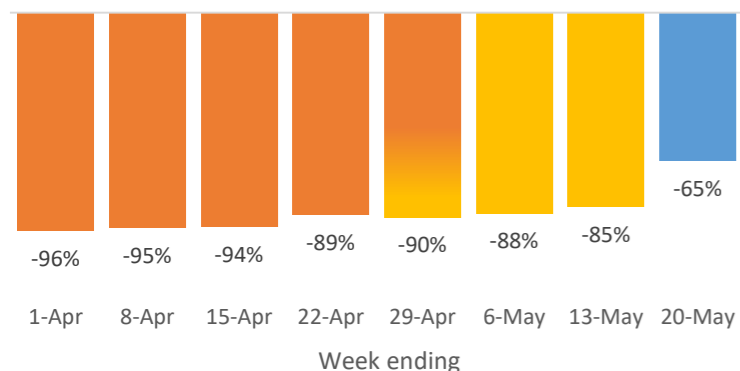
The transport dashboard contains primarily key lag indicators. Therefore, the impact of COVID-19 may not necessarily be evident immediately in the graphs. This will be updated weekly and will focus on those indicators (or components of indicators) showing an increase or decrease, when compared to the previous year. The transport dashboard is supplementary to indicators captured in other COVID-19 dashboards, such as economic indicators.

Public Transport

Public Transport (Bus) Patronage

(Only for Auckland, Wellington & Christchurch - vs equivalent week in 2019)

No alert level : Level 1 : Level 2 : Level 3 : Level 4



Change in public transport (bus) patronage week ending 20 May 2020 compared with previous week

140%

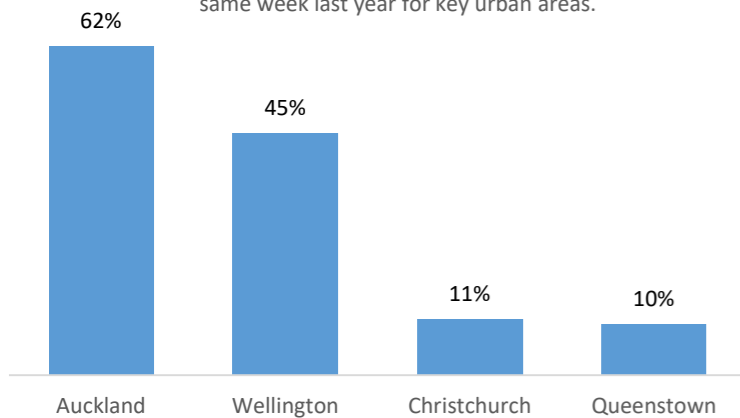
Summary of impacts to the transport system:

- Comparisons to 2019** – The week beginning 22 April 2019 had **two public holidays** (Easter Monday and Anzac Day). This resulted in a significant change in travel patterns for that week (fewer people travelling for work, fewer services operating). This will be reflected in many of the graphs in this dashboard and some may show **different trends** from previous dashboards as a result.
- Public transport** – For the week ending 20 May, combined bus patronage for Auckland, Wellington and Christchurch **decreased 65%** compared to the equivalent week last year, but **increased 140%** compared to last week *this year*. Likewise, Auckland train patronage **decreased 71%** compared to the equivalent week last year but **increased 177%** compared to last week *this year*. Auckland ferry patronage **decreased 71%** in the week ending 20 May compared to the equivalent week last year, but **increased 600%** compared to last week *this year*.
- Road traffic** – For the week ending 15 May, average speeds continue to be higher compared to the equivalent week last year for all four key urban areas, implying a **reduction** in road traffic levels. Traffic count data for the week ending 20 May supports this and is showing that in some cities (not all) heavy vehicle counts are now even **higher** compared to the same time last year.
- Air travel** – For the week ending 20 May, international passenger arrivals **decreased 99%** compared to the equivalent week last year. There was an **increase of 1%** compared to last week's (ending 13 May) arrivals.
- Rail freight** – For the week ending 17 May, KiwiRail's freight **decreased 16%** compared to the equivalent week last year and **increased 10%** compared to last week.
- Heavy vehicle travel** – As of 20 May 2020 the total distance heavy vehicles travel has **increased 8%** compared to 13 May 2020, and visits by heavy vehicles to ports has on average **increased 2%**.
- Cook Strait** – For the week ending 20 May 2020, truck boardings on the Interislander **increased 12%** compared to last week (ending 13 May) and passenger boardings **increased 120%** compared to last week.
- Imports and Exports: Sea** – Imports **decreased 21%** and exports **decreased 17%** in April 2020 compared to April 2019. Fish exports have significantly reduced in April 2020. May data is still incomplete and April data lags have now been corrected.
- Motor Vehicle Registrations** – New and NZ-new vehicle registrations for the week ending the 20th of May increased to **over 95%** of the equivalent week in 2019.
- Road fatalities** – During the Level 4 lockdown (2359 hours Wednesday 25 March to 2359 Monday 27 April) there were **13** road deaths from **13** fatal crashes, during Level 3 (2359 Monday 27 April to 2359 Wednesday 13 May) there were **8** road deaths from **8** fatal crashes. There has been **8** road deaths so far for Level 2 that began at 2359 Wednesday 13 May. As at midnight 24 May there were **109** road fatalities year to date, this is **50** fewer road fatalities than the same time last year.
- Self-reported behaviours and attitudes** – Over the last seven weeks, attitudinal surveys were conducted as part of Waka Kotahi's Sector Research Programme:
 - Alert level 2 has seen most transport modes (aside from bus) return to, or return close to, usual pre-Covid levels (note – we do not have usual pre-Covid data for plane usage, although we know from other data that plane usage has definitely not recovered to usual pre-Covid levels).
 - Of those respondents who cycled for leisure or fitness during alert level 4, **48%** cited fewer vehicles on the road as motivator. Likewise, **27%** of people who walked or ran for leisure or fitness during alert level 4 cited fewer vehicles on the road as a motivator.
 - Last week **27%** of respondents said they do not feel able to get where they need to go (this has remained relatively steady between 26-31% over the last seven weeks).
 - Last week **5%** of respondents said they still do not understand the current travel/movement restrictions (this too has remained relatively steady between 4-7% over the last seven weeks).

Road speeds

Speed of Traffic Flowing Through Urban Areas

The change in the average travel speeds as of 15 May compared to same week last year for key urban areas.



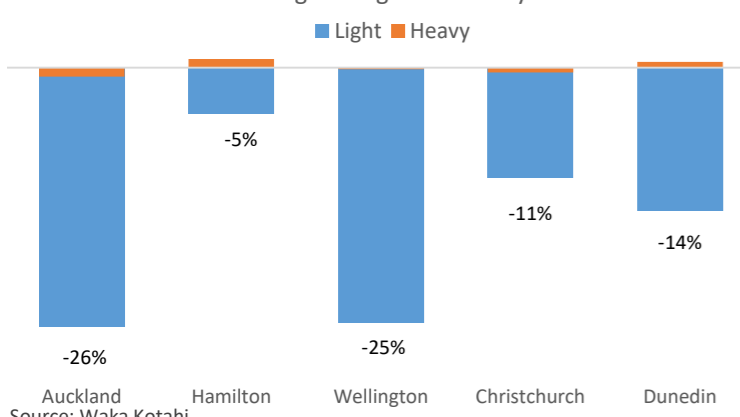
Change in average speeds for week ending 15 May compared with previous week

3%

Road Traffic Count

Total traffic count flowing through key urban areas

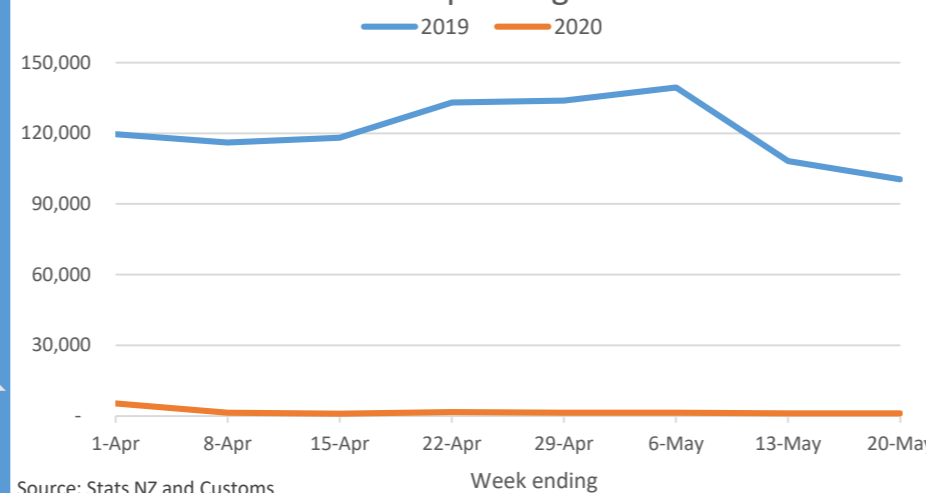
Week ending 20 May compared to same week last year. Labels refer to total change for light and heavy vehicles



Change in traffic counts for week ending 20 May compared with previous week

39%

International passenger arrivals

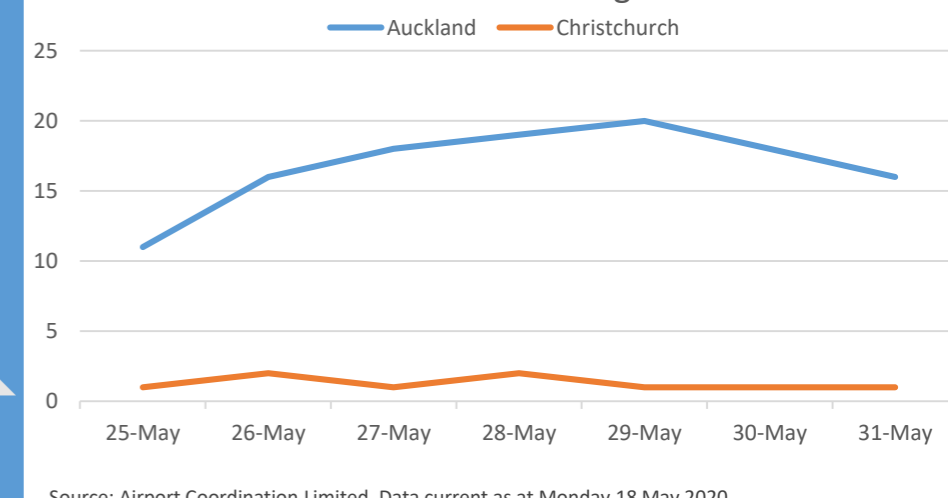


Air Travel

Change in international arrivals for the week ending 20 May compared with last week

1%

International Scheduled Flight Arrivals

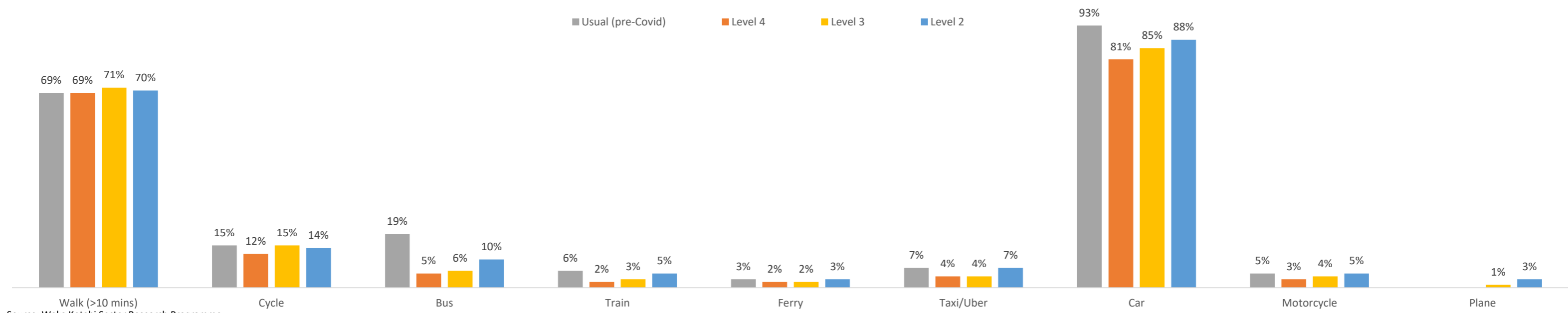


Source: Airport Coordination Limited. Data current as at Monday 18 May 2020

Attitudinal survey results

Mode usage by % of respondents

■ Usual (pre-Covid) ■ Level 4 ■ Level 3 ■ Level 2

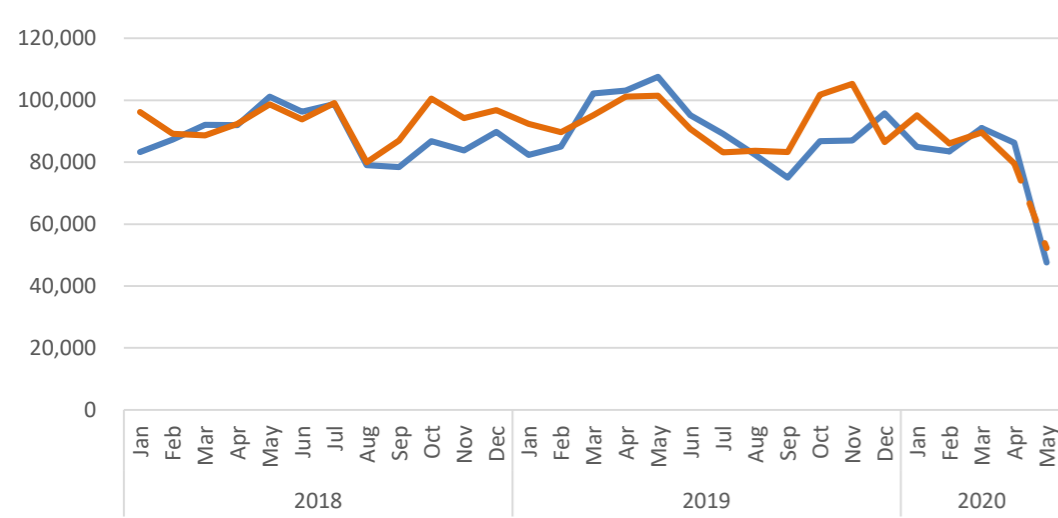


Source: Waka Kotahi Sector Research Programme

Imports and Exports - Sea

Imports & Exports - Containers (TEU)

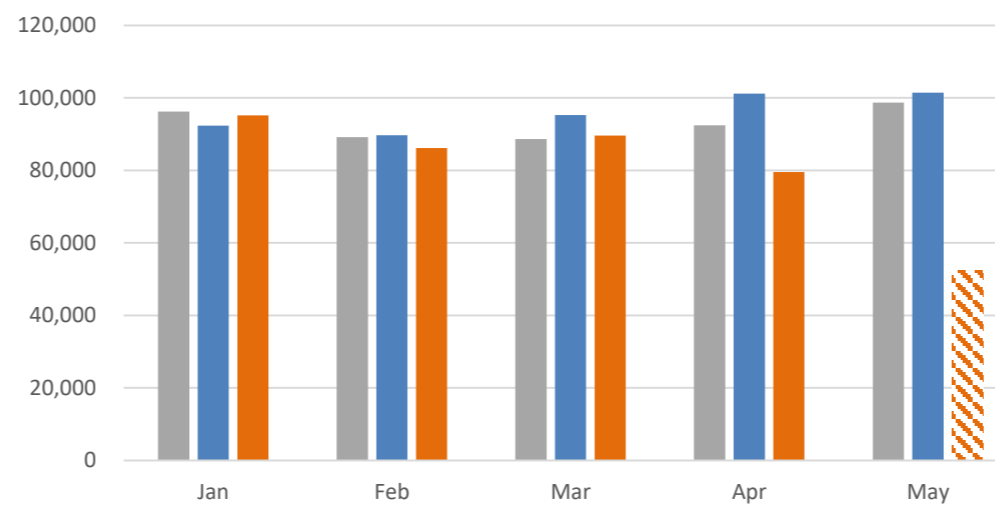
— Export — Import



Source: Ministry of Transport

Imports - Containers (TEU)

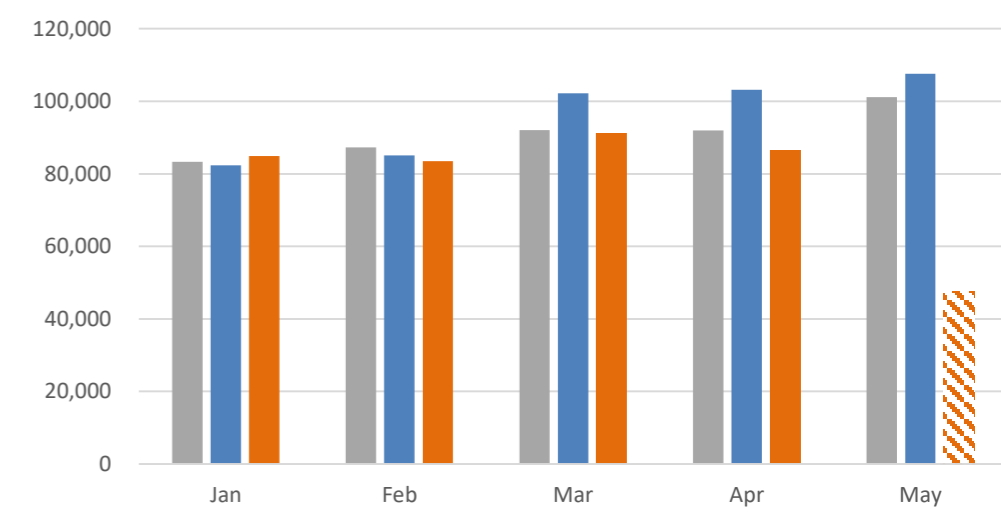
■ 2018 ■ 2019 ■ 2020



Source: Ministry of Transport

Exports - Containers (TEU)

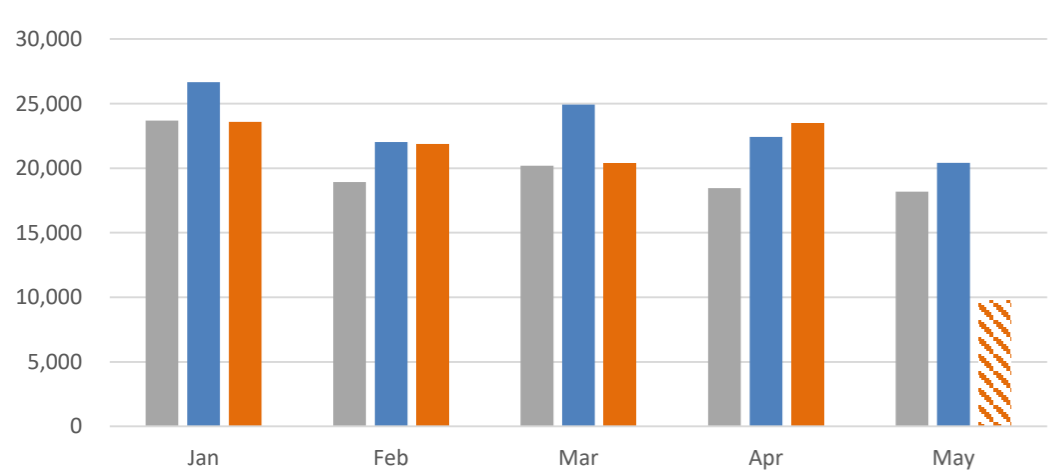
■ 2018 ■ 2019 ■ 2020



Source: Ministry of Transport

Dairy Exports - Containers (TEU)

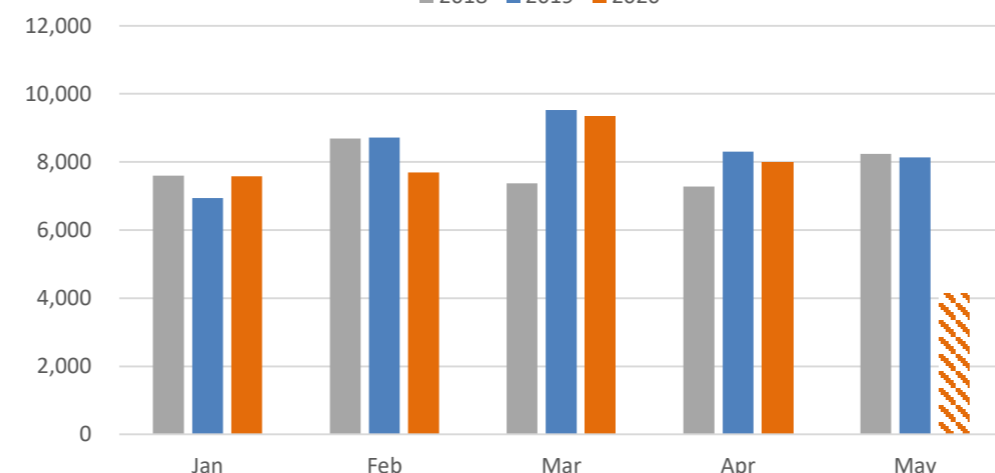
■ 2018 ■ 2019 ■ 2020



Source: Ministry of Transport

Meat Exports - Containers (TEU)

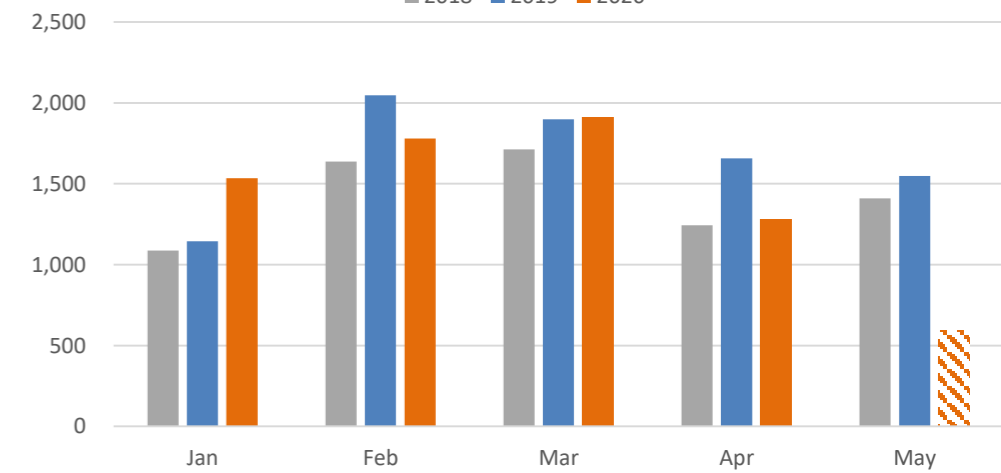
■ 2018 ■ 2019 ■ 2020



Source: Ministry of Transport

Fish Exports - Containers (TEU)

■ 2018 ■ 2019 ■ 2020



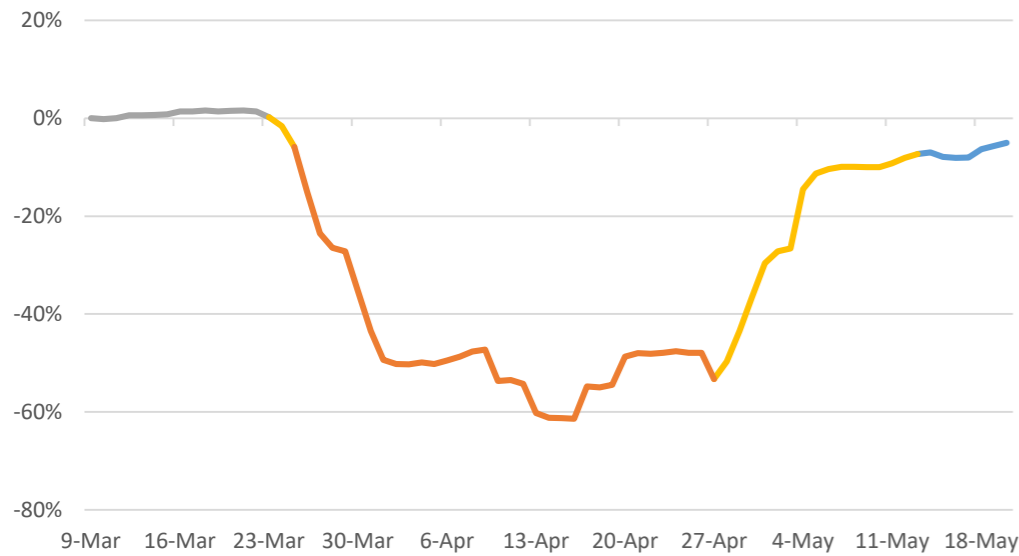
Source: Ministry of Transport

Heavy vehicle travel

Daily distance change for heavy vehicles

compared to 9 March 2020

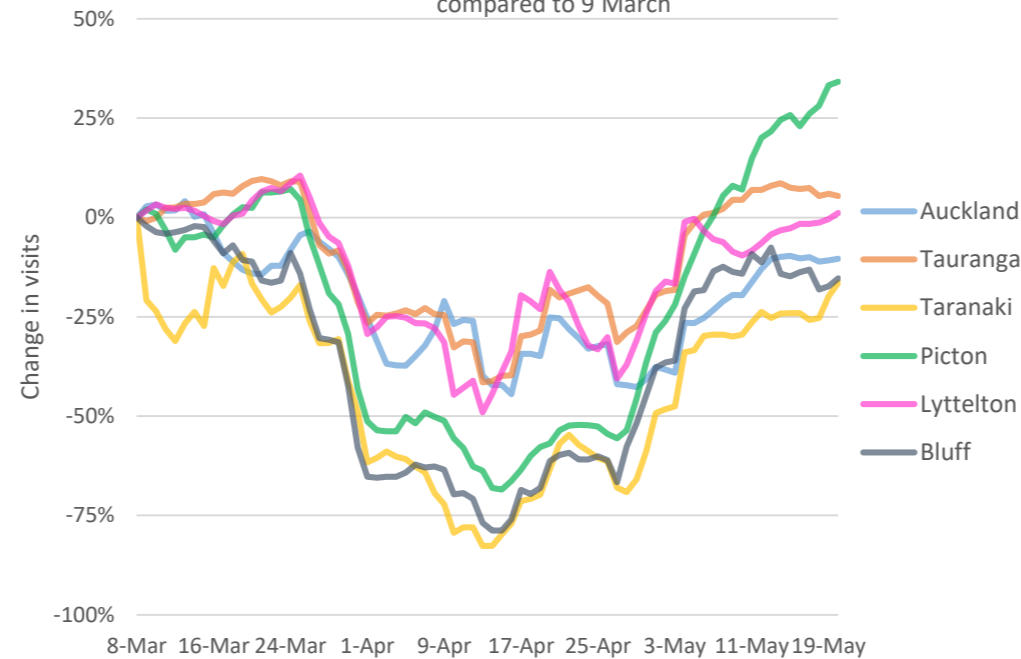
No alert level : Level 1 : Level 2 : Level 3 : Level 4



Source: EROAD

Daily heavy vehicle visits to ports

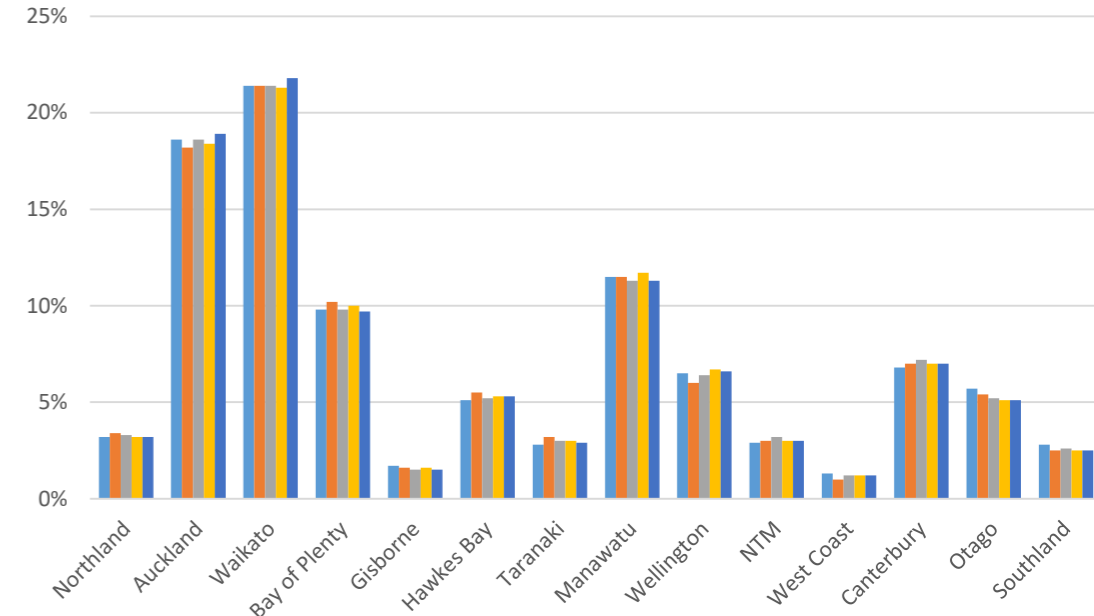
compared to 9 March



Source: EROAD

Proportion of interregional travel

w/c 2nd March : 21-28 days ago : 14-21 days ago : 7-14 days ago : 0-7 days ago



Source: EROAD

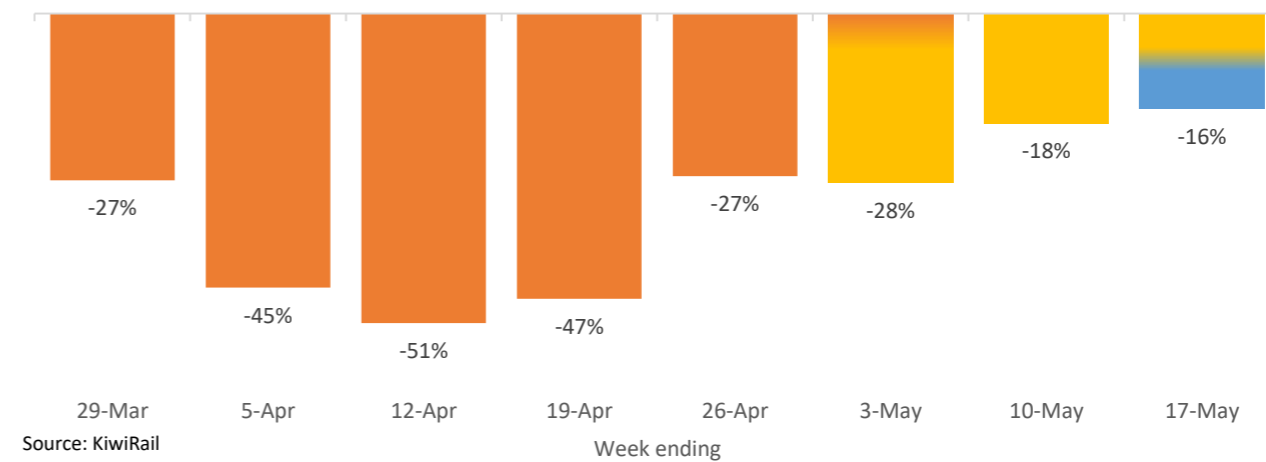
Key events:

- **28 February 2020** – First case of COVID-19 in NZ.
- **16 March 2020** – The New Zealand Government has announced temporary restrictions on travellers arriving in New Zealand from mainland China or Iran as a precautionary measure to protect against the spread of COVID-19. The restrictions prevent foreign nationals travelling from or transiting through mainland China or Iran from entering New Zealand. Cruise ships banned from entering until at least 30 June 2020.
- **20 March 2020** – The New Zealand border is closed to anyone who is not a New Zealand citizen or permanent resident. In light of this, we anticipate a further significant decline in international air traffic.
- **21 March 2020** – Government announces COVID-19 alert system, and the country is initially set at Alert Level 2.
- **23 March** – Government moves country to Alert Level 3. Surge in demand for domestic air and inter-island services.
- **25 March** – A State of National Emergency is declared. At 11.59pm the country moves to Alert Level 4 and will remain at this level for at least four weeks.
- **26 March** – Public transport becomes free but can only be used by essential workers or for essential trips. Shared e-scooter services suspended.
- **27 March** – Domestic air travel and Cook Strait passenger services restricted to essential workers only.
- **3 April** – Foreign nationals returning home will be deemed “essential travel” and will be allowed to travel domestically (by air or land). Foreign governments can arrange charter flights to repatriate their citizens currently in New Zealand.
- **10 April** – Every Kiwi boarding a flight to return home will have to go into mandatory quarantine for 14 days, at least. This requirement, in a government facility, is a prerequisite for anyone entering the country.
- **16 April** – To support the movement of essential freight, non-essential freight that is already in the transport system can now be distributed and received, including de-vanning and delivery to businesses and customers. All freight can also enter and leave the country. The intention of the refinement is to clear the system so essential freight can move as freely as possible. This does not change the restrictions on non-essential businesses, who remain unable to trade under Alert Level 4, except to receive goods.
- **27 April 11.59pm** – New Zealand moves country to Alert Level 3.
- **13 May 11.59pm** – New Zealand moves to Alert Level 2.

Rail Freight

Change in rail freight compared to same week last year

No alert level : Level 1 : Level 2 : Level 3 : Level 4



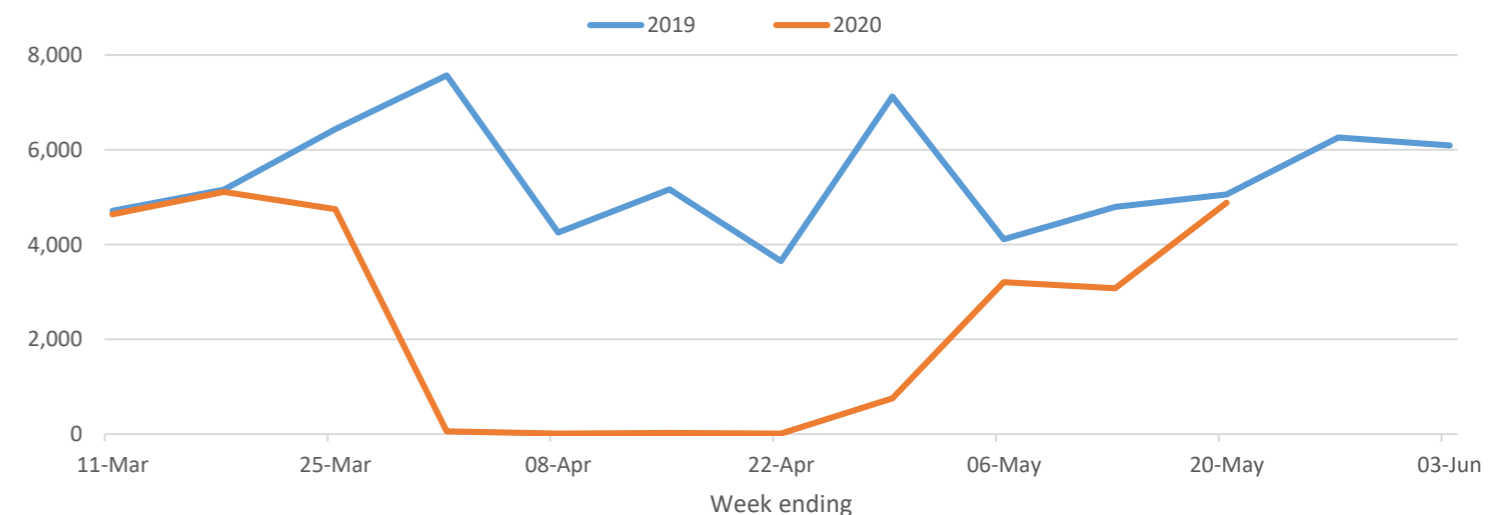
Source: KiwiRail

Rail freight compared to last week

10%

Motor Vehicle Registrations

Weekly total new light-vehicle registrations (new & used imports)



Source: Ministry of Transport and Waka Kotahi MVR

Data enquiries:

Please refer all enquiries relating to ACL data to the Ministry of Transport in the first instance. For all other enquiries, please contact data source organisation relating to data used to generate graphs in this dashboard. Please note: We are not responsible for the quality or accuracy of data from external sources.

Ministry of Transport Freight Information Gathering System (FIGS) data presented in the graphs in this dashboard are provisional only. This data can be found within a detailed quarterly update that will be published on the ministry website: <https://www.transport.govt.nz/mot-resources/freight-resources/figs/>